



Entire School/Campus Building
New Construction

OWP/P

Architect
111 W. Washington Street,
Suite 2100
Chicago, IL 60602
www.owpp.com
Rick Dewar, Project Director
312/960-8034

OA + D ARCHITECTS

Associate Architect
www.oadarchitects.com

DESIGN TEAM

Rick Dewar, Project Director
Trung Le, Design Principal
David Powell, Project Manager
Kerry Leonard,
Senior Educational Planner
Keith Hammelman,
Lead MEP Engineer
Angeline Schaeffer,
Lead Electrical Engineer
Wendy Watts,
Interior Design Architect

OWNER/CLIENT

Cayman Islands Ministry of
Education, Training, Employment
Grand Cayman, Cayman Islands
Angela Martins, Chief Officer

Type of School and
Grades Served:
High School, 6-11
(at all campuses)

Capacity: 1,000 students
(Per campus)

Size of Site: 17.1 to 27.5 acres

Area of Building:
94,865 to 134,955 square feet
(Per campus)

Space per Student:
135 to 190 square feet

Cost per Student:
\$59,000 to \$98,000

Square Foot Cost: \$437 to \$525

Cost of Construction:
\$49 to \$59 million

Contract Date: Summer 2008

Completion Date: Aug. 2010

HIGH SCHOOLS

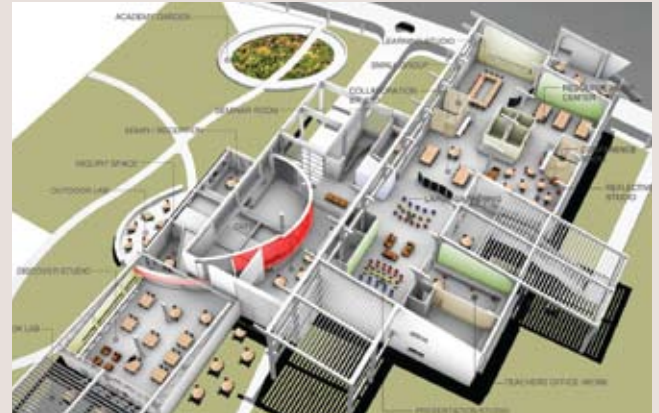
Cayman Islands Ministry of Education— New High School Campuses

Grand Cayman, Cayman Islands

OWP/P

The objective for the Cayman Islands High Schools is to provide a framework of opportunities for everybody on the islands. In an effort to equip Caymanian students to compete on the international stage, the Ministry of Education is in the process of updating the current educational program.

Taking an innovative approach to learning in the 21st century, the design team developed a concept plan for



OVERHEAD INTERIOR OF ACADEMY



EXTERIOR OF GLOBAL LEARNING CENTRE

Cayman's three high school campuses that emphasizes project-based learning and breakout spaces, rather than classrooms. Project-based learning enables creativity and flexibility while helping students develop skills for living in a knowledge-based, highly technological society.

Students participate in projects and practice interdisciplinary subjects from math, language arts, fine arts, geography, science, and technology. Each of the three high school campuses features four autonomous academy buildings serving grades 6-11. The academies share a global learning



INTERIOR OF DISCOVERY CENTRE

center, performance building, and design and technology building with each other and the community.

Connection with the culture and community are paramount to the design concept. For

example, each campus will focus on a particular sport important to the culture, such as cricket and net ball. Images of nature, art, and local industry on the island will also be highlighted. ■