



Entire School/
Campus Building
New Construction

NTD ARCHITECTURE

200 Auburn-Folsom Road,
Suite 200
Auburn, CA 95603
www.ntd.com
Jordan Knighton, AIA
530/888-0999

DESIGN TEAM

Jordan Knighton, AIA,
Partner-in-Charge

Michael Marquez Associate, AIA,
Project Manager/
Project Designer
Brandon Rachac,
Project Team Leader

OWNER/CLIENT

Western Placer Unified School
District
Lincoln, CA
Scott Leaman,
Superintendent
916/645-6350

Type of School and
Grades Served:
High School, 9-12

Capacity: 1,400 students

Size of Site: 49 acres

Area of Building:
154,000 square feet

Volume of Building:
2.5 million cubic feet

Space per Student:
110 square feet

Cost per Student: \$52,142

Square Foot Cost: \$474

Cost of Construction:
\$73 million

Total Project Cost:
\$90 million

Contract Date: Jan. 2004

Completion Date: Aug. 2010

Percent of Completion: 75%

HIGH SCHOOLS

Twelve Bridges High School

Lincoln, California

NTD Architecture

The growth in the Western Placer Unified School District is projected to increase rapidly over the next 10 years. To meet the challenge, the district was proactively involved in a community-based planning process. Through the process, partnerships emerged among the city, district, and college resulting in a collaborative campus of shared vision. A life-long-learning campus evolved with the high school, community college, and civic library sharing common facilities. An alternative project-based learning academy, performing arts, library, gymnasium, dining commons, and a public urban park are incorporated.

The high school architecture is composed of courtyard academies celebrating thematic curriculums of science, culture, environment, technology,



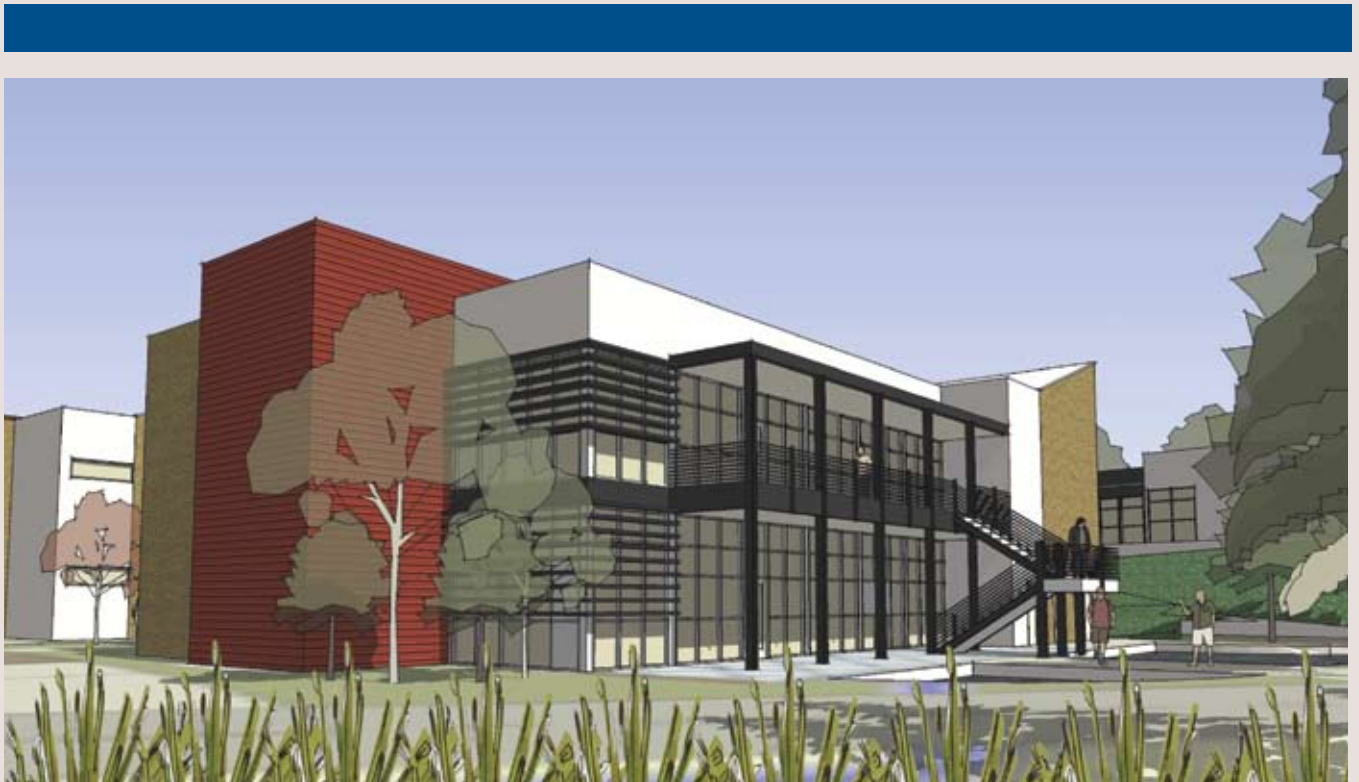
CAREER CENTER/STUDENT CAFÉ



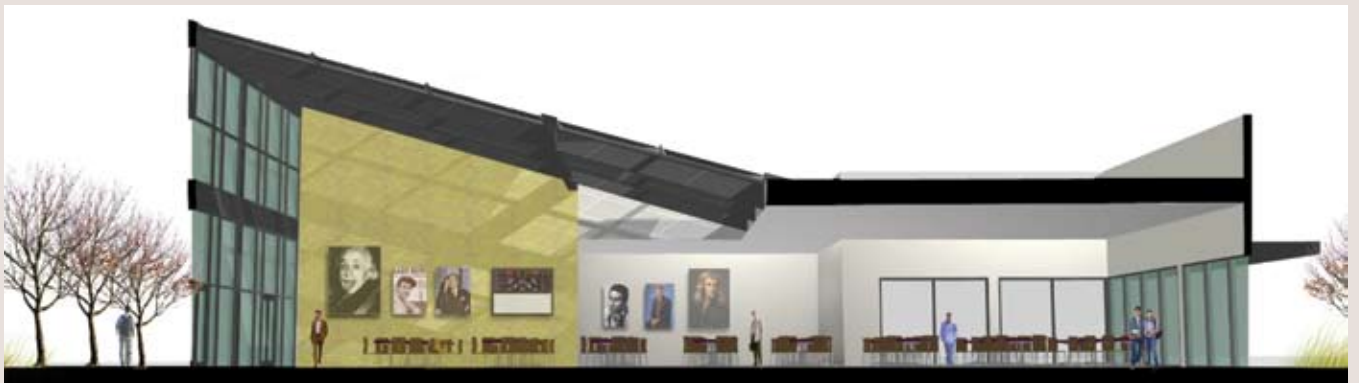
SHARED COMMUNITY THEATER



BRID'S-EYE VIEW OF CAMPUS



ENVIRONMENTAL STUDIES LAB



CAMPUS COMMONS



STUDENT ENTRY TO PERFORMING ARTS CENTER

and wellness. Indoor and outdoor lab and lecture halls create both traditional and alternative learning options. The academies are connected to joint-use lab and project flex areas that surround dedicated outdoor lab learning areas.

The campus site is adjacent and interlocking with partners while remaining segregated through placement in a natural down-sloping, bowl-shaped topography. The result is privacy in a controlled and nurturing location. The south-facing, stair-stepping architecture offers views across wetlands and open space. ■